

**CIRTEMO™**  
presents

# The Adventures of



**Real-Time Sensor with MOE**

Monday morning at the Product X Industries

Is this POTTIS,  
the Plant Manager?

Yes it is...  
who is this?





**This is MR BIG! We're having an entire shipment returned this morning because it's OUT of SPEC!**

**MMMR. BIG??? I don't understand, we have a very stringent testing process. Our quality control makes this impossible!**

**It's not IMPOSSIBLE because it IS HAPPENING!!**



**Yes Sir... Of course Sir...**

**Listen to me Potts,  
every time we ship  
"Out of Spec" Product X  
we risk losing our  
customers. In addition  
it costs us time, money,  
energy, and re-work!  
....It could cost you  
your JOB if this  
happens again!**

**But, Sir....  
I don't know where  
to start...**

**CLICK!**

**Ms. Jones! Tell someone  
in Quality Control that  
I'm coming down there!  
I Want Some  
Answers!**

**Yes Mr P.**



QUALITY CONTROL

WHAT IS GOING ON DOWN HERE!!!

Mr Potts?



**W, W, What do you mean sir??**

**I just got a call from Mr Big...  
We've had an entire shipment  
of Product X returned for being  
**OUT OF SPEC!**  
It was produced over a 2 week  
period last month!**

**(GULP!) That's Impossible!...**





**We take samples off the line every hour, test them and make adjustments!**

**I know that!  
What about  
in-between  
your tests?**

**Em, huh?  
What do you  
mean sir?**

**RESULTS**

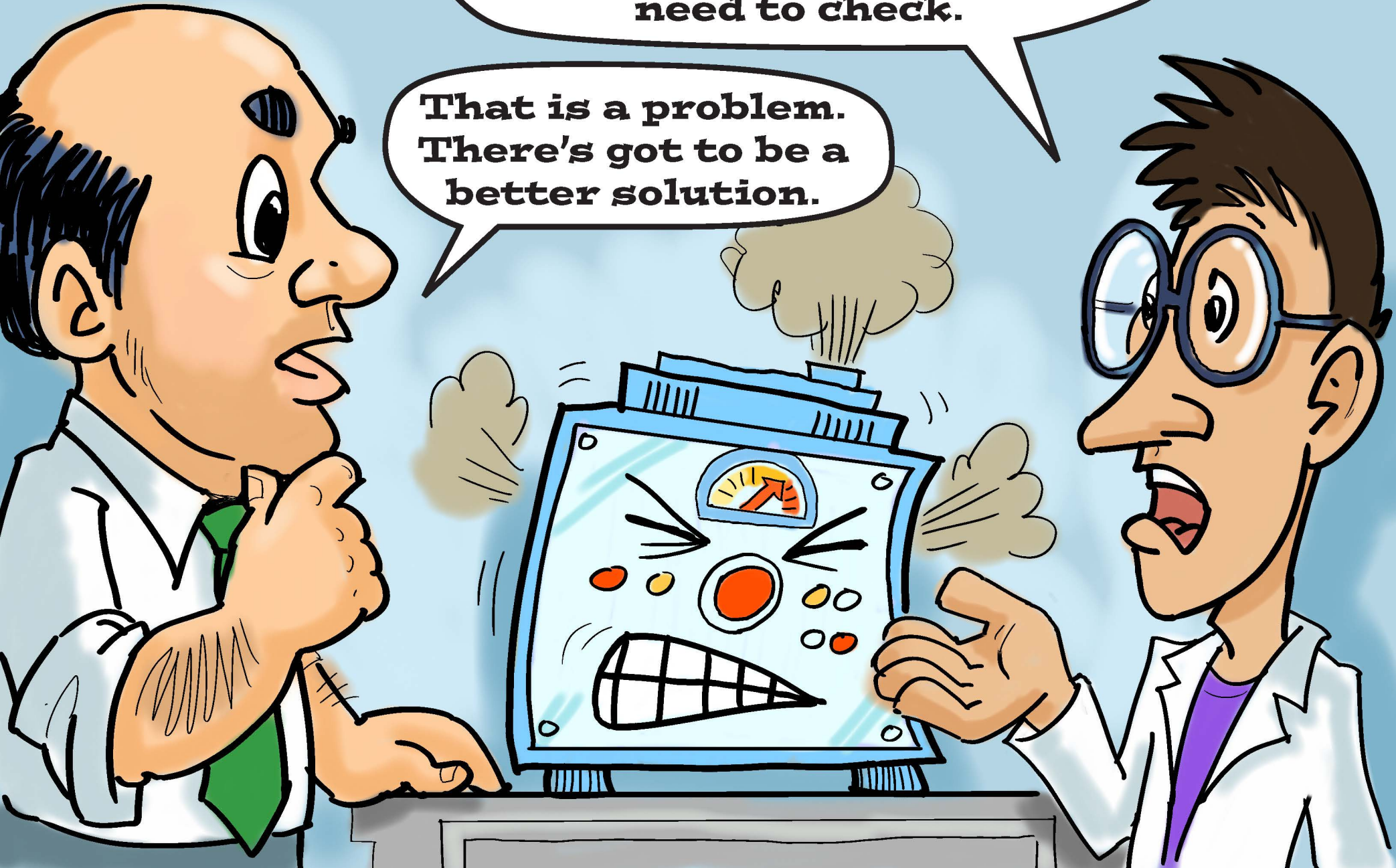


**What I mean is...  
all the PRODUCT X  
that is produced in between  
your tests, isn't tested!  
That could be the  
OUT of SPEC output!**

**But sir, we can't run  
any more tests!**

**Our Lab Analyzer is barely keeping up now. It just takes too long to analyze all the chemical components we need to check.**

**That is a problem. There's got to be a better solution.**





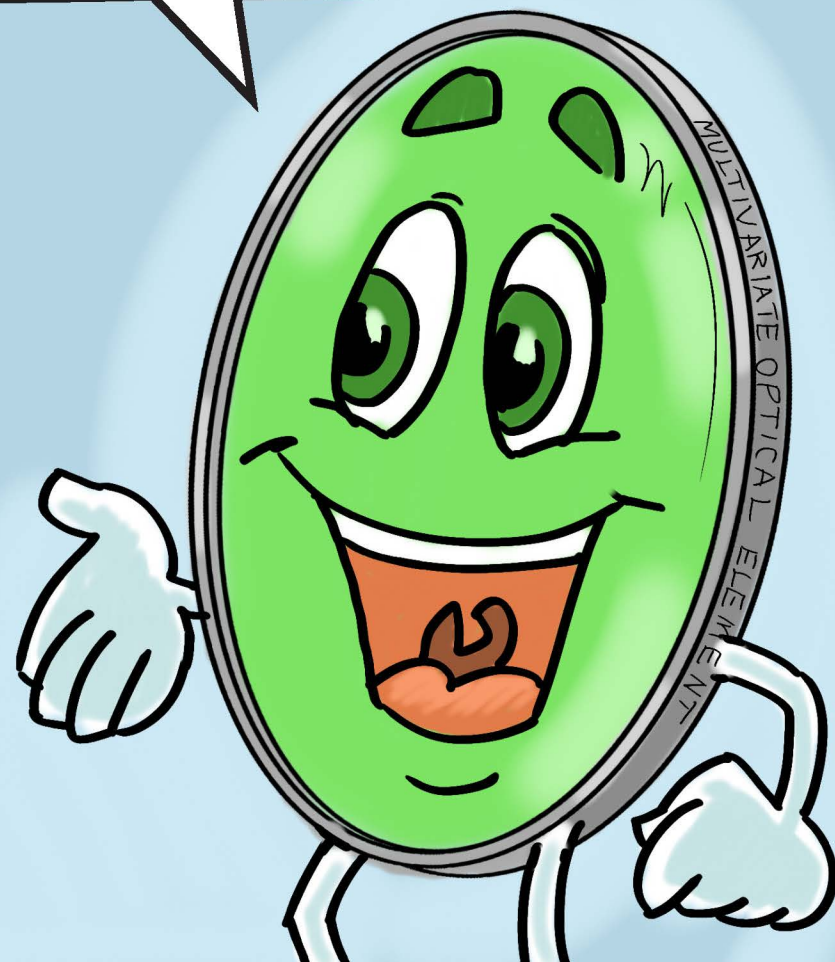
**I've got an idea!  
We went to a conference  
and heard a guy...  
MOE! That was his name.  
He was talking about how  
he could help solve  
problems like this!  
He works for  
**CIRTEMO...**  
Let's call them!**

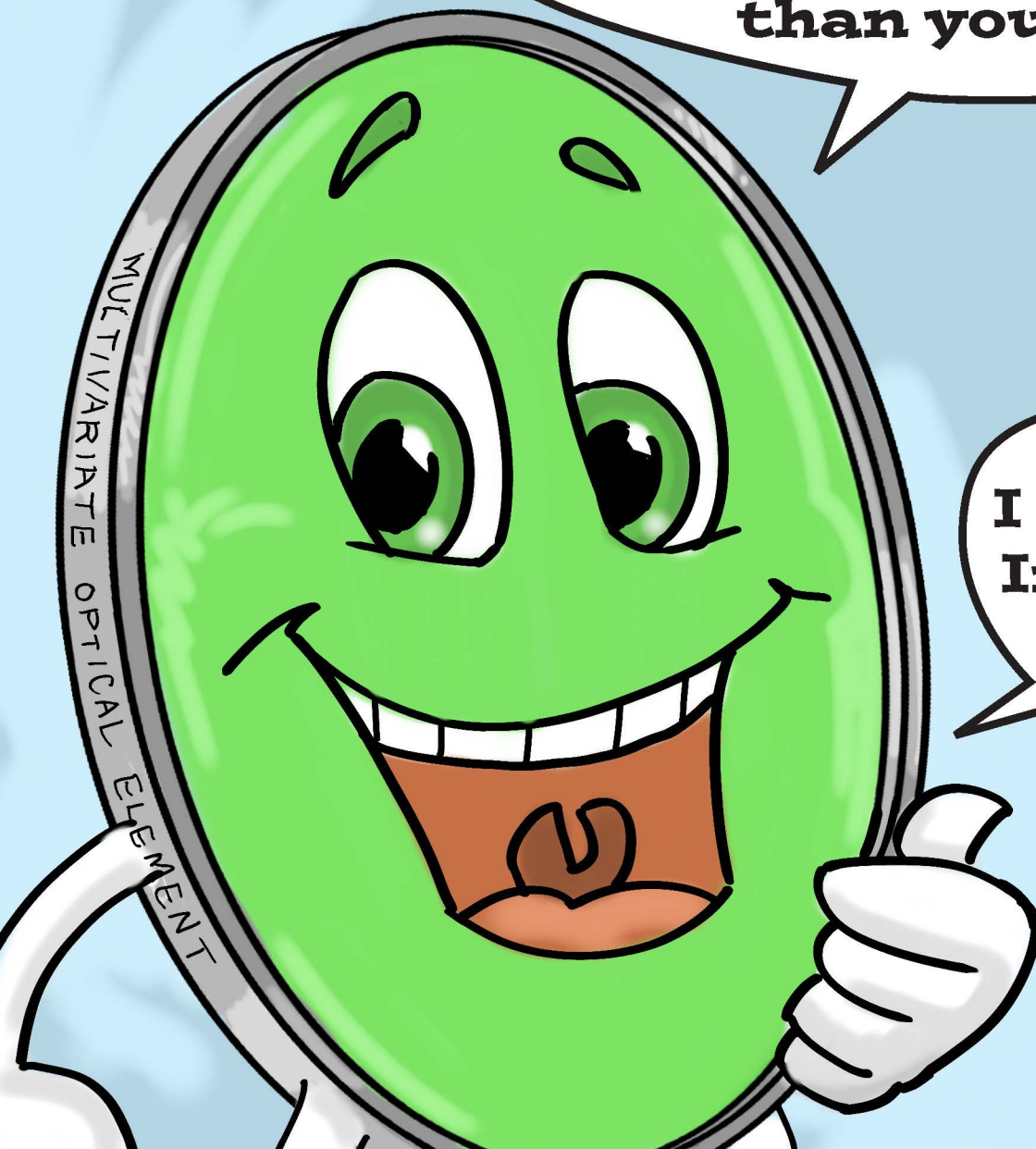
**Good!  
Call them today.**

...so MOE, that's our problem. We can't test more often, but we really can't have any more returned shipments!

I understand, but what if you could test continuously?

What??  
How??





**I'm able to detect a much higher range of chemical compounds and process overlapping signals much quicker than your old analyzer.**

**WOW!**

**With our partners, I could be deployed as a In-Line and Real-Time sensor for process control!**

After the install!

**WOW! This is GREAT!**  
Now we know every drop  
of **PRODUCT X**  
is "In Spec"!

**No more returned  
shipments!**  
(or calls from Mr. Big!)  
**Thanks CITEMO  
and MOE!**

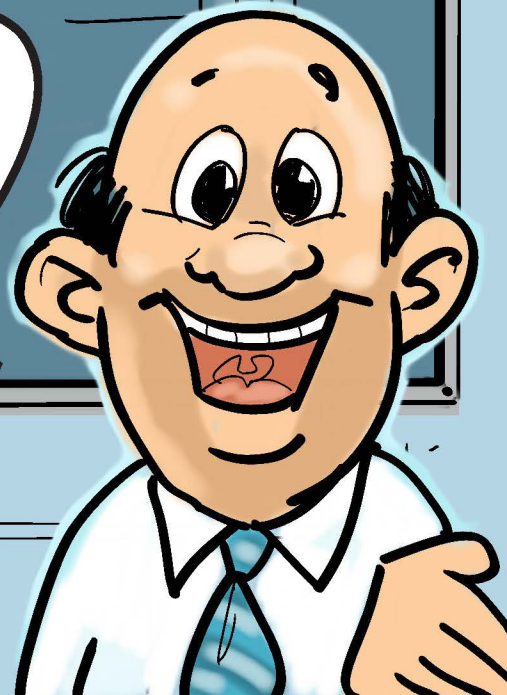
REAL-TIME  
SENSOR  
POWERED BY  
**CITEMO**

REAL-TIME DATA  
- CITEMO

CAUTION

↑ FLOW

↓ FLOW



# CIRTEMO™

**Visit [www.cirtemo.com](http://www.cirtemo.com)  
or call 803-467-4189  
to see how MOE  
can help you!**

**The Adventures of**

