

**CIRTEMO™**  
presents

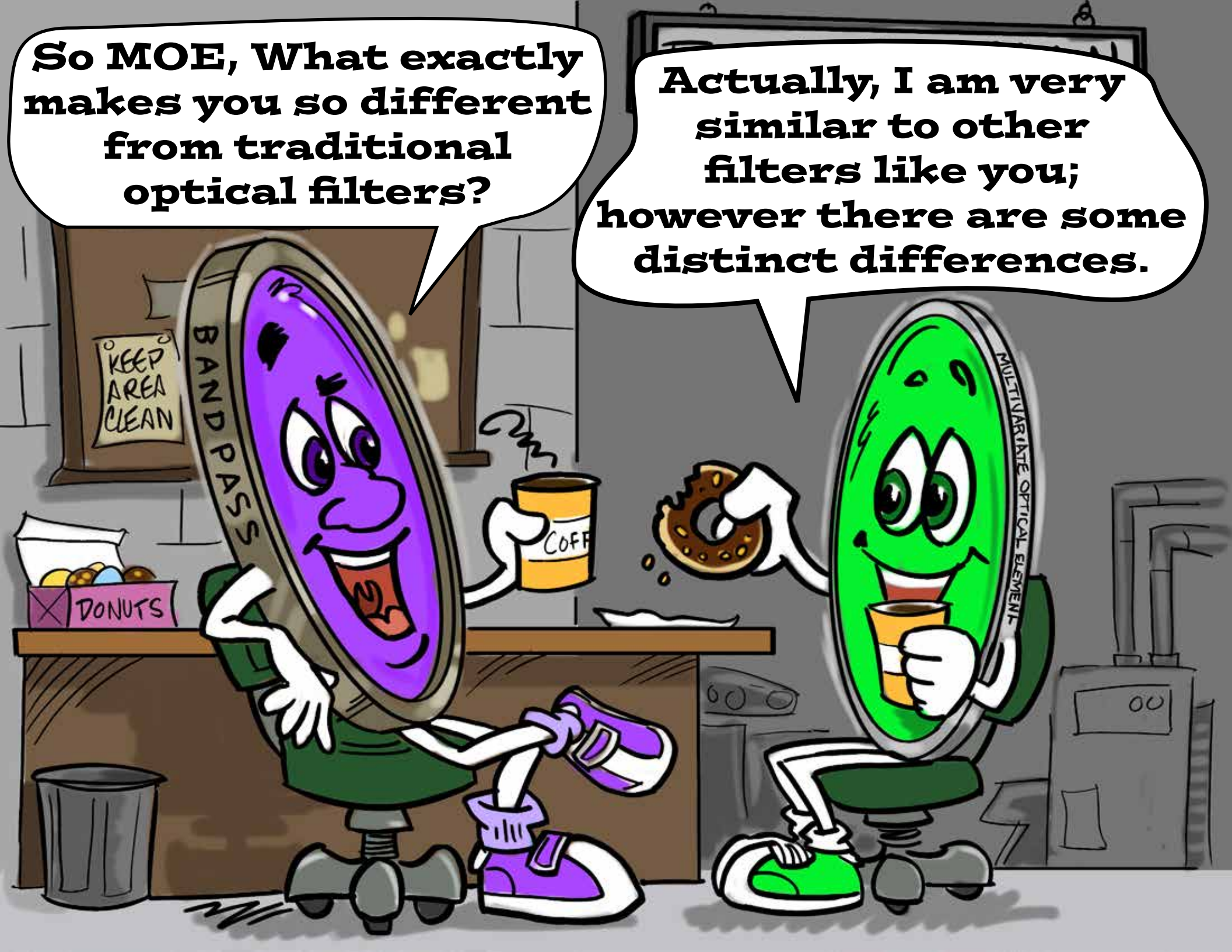
# The Adventures of



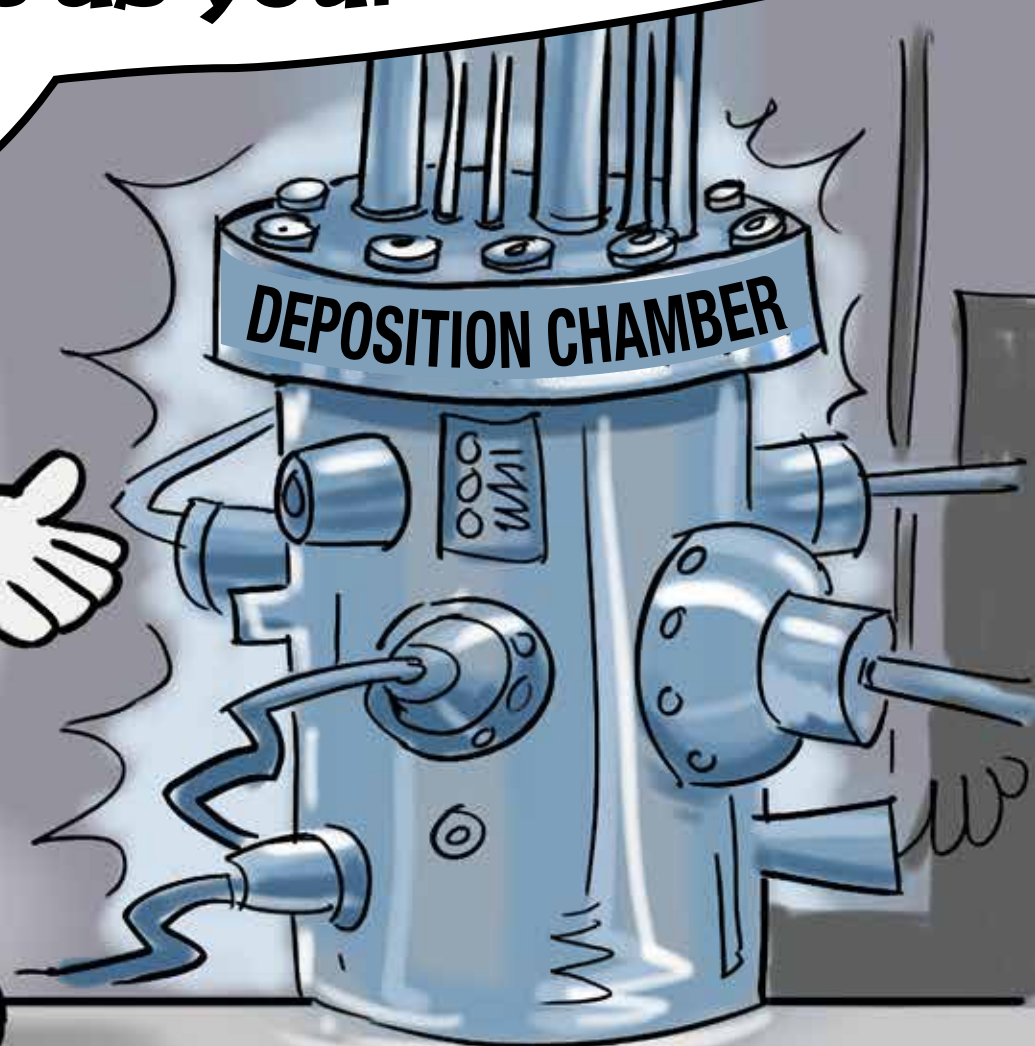
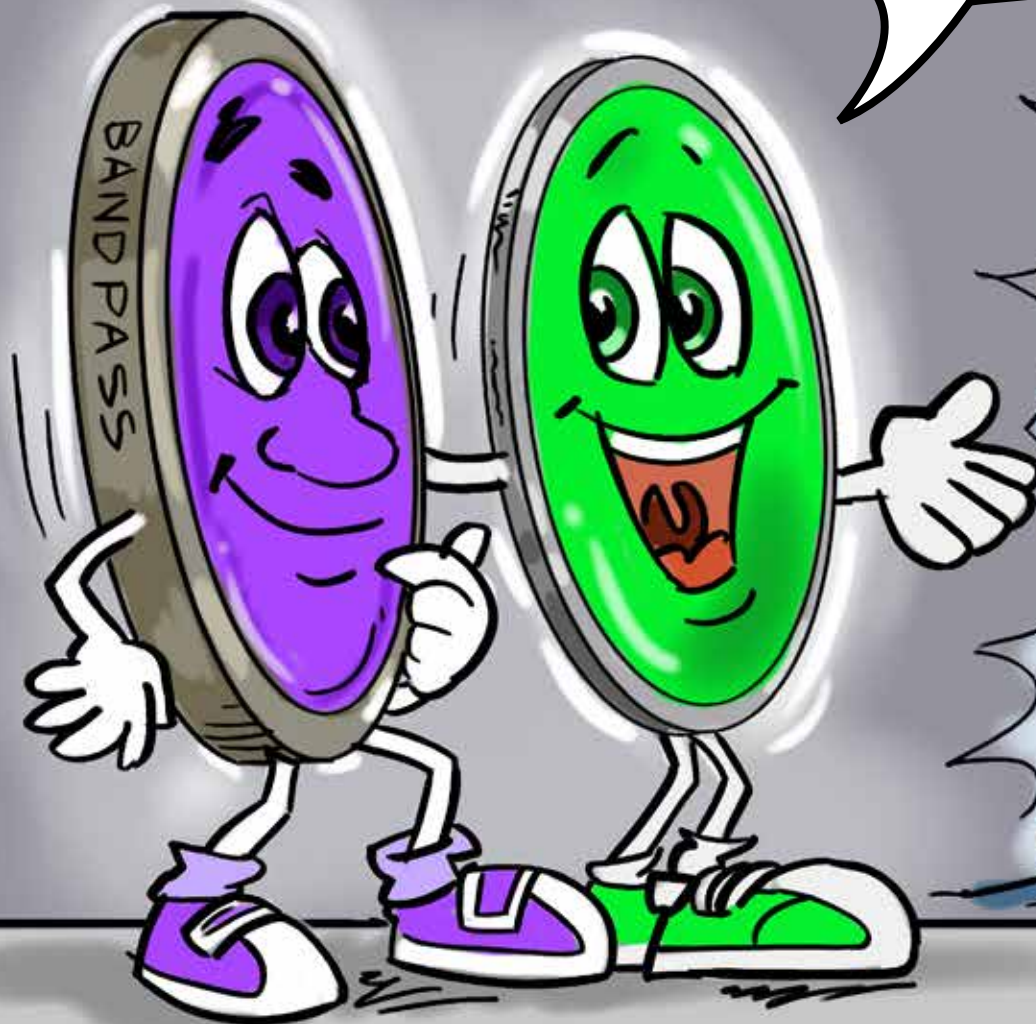
**MOE and Bandpass - Working Together**

**So MOE, What exactly makes you so different from traditional optical filters?**

**Actually, I am very similar to other filters like you; however there are some distinct differences.**

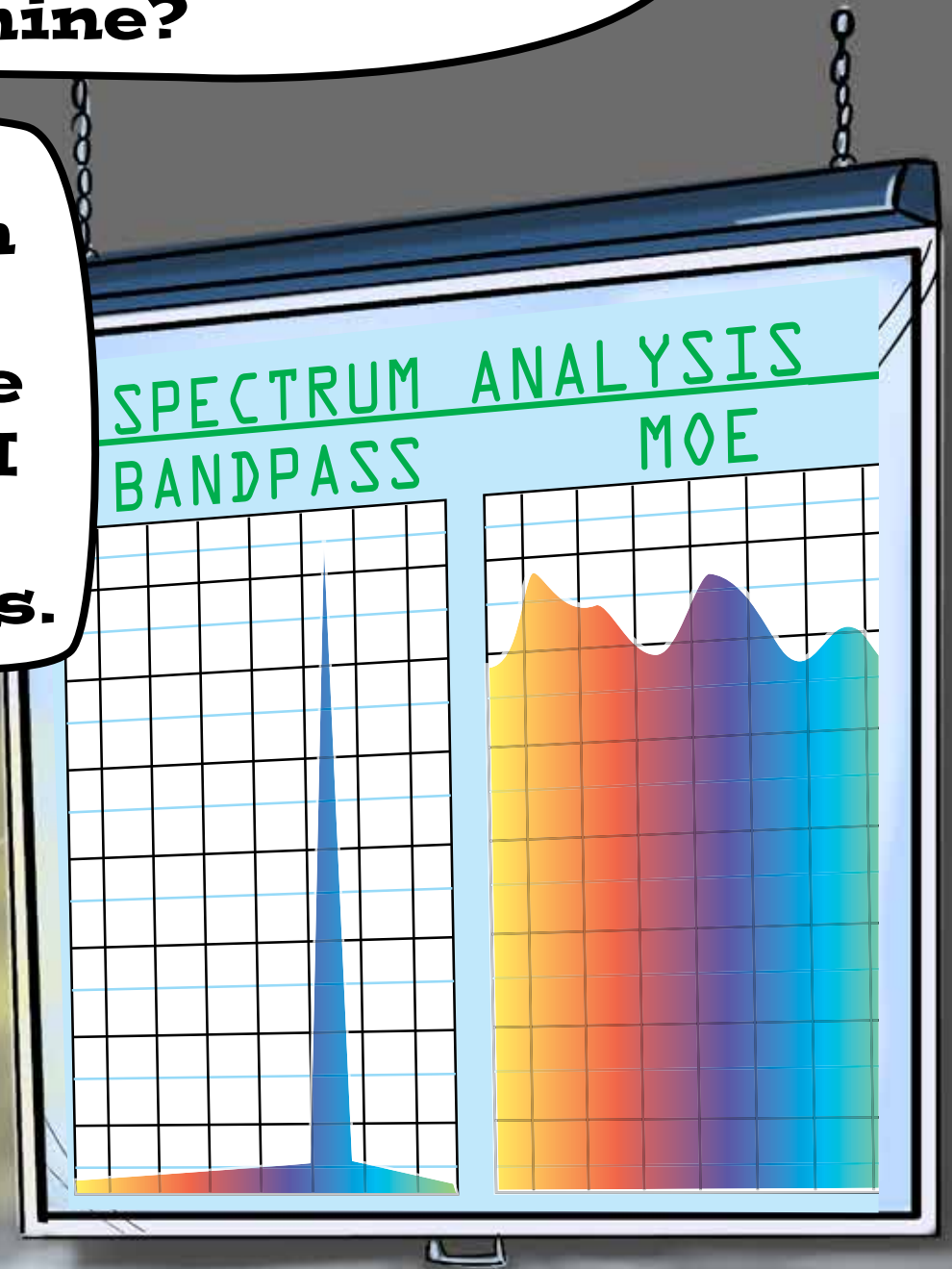


**Let me start with where we are similar. MOEs are made the same way as other optical filters. I am made with the same materials as you.**



**But MOE, why does your spectrum look funny like a rolling landscape and not sharp like mine?**

**That's because I am an application specific filter. I also tend to have fewer layers and I am thinner than most optical filters.**



**That funny looking spectrum is actually a complicated mathematical pattern. Instead of trying to make band pass filters work in an application, I am designed from the bottom up and optimized for the application using a sophisticated cluster computing design algorithm.**

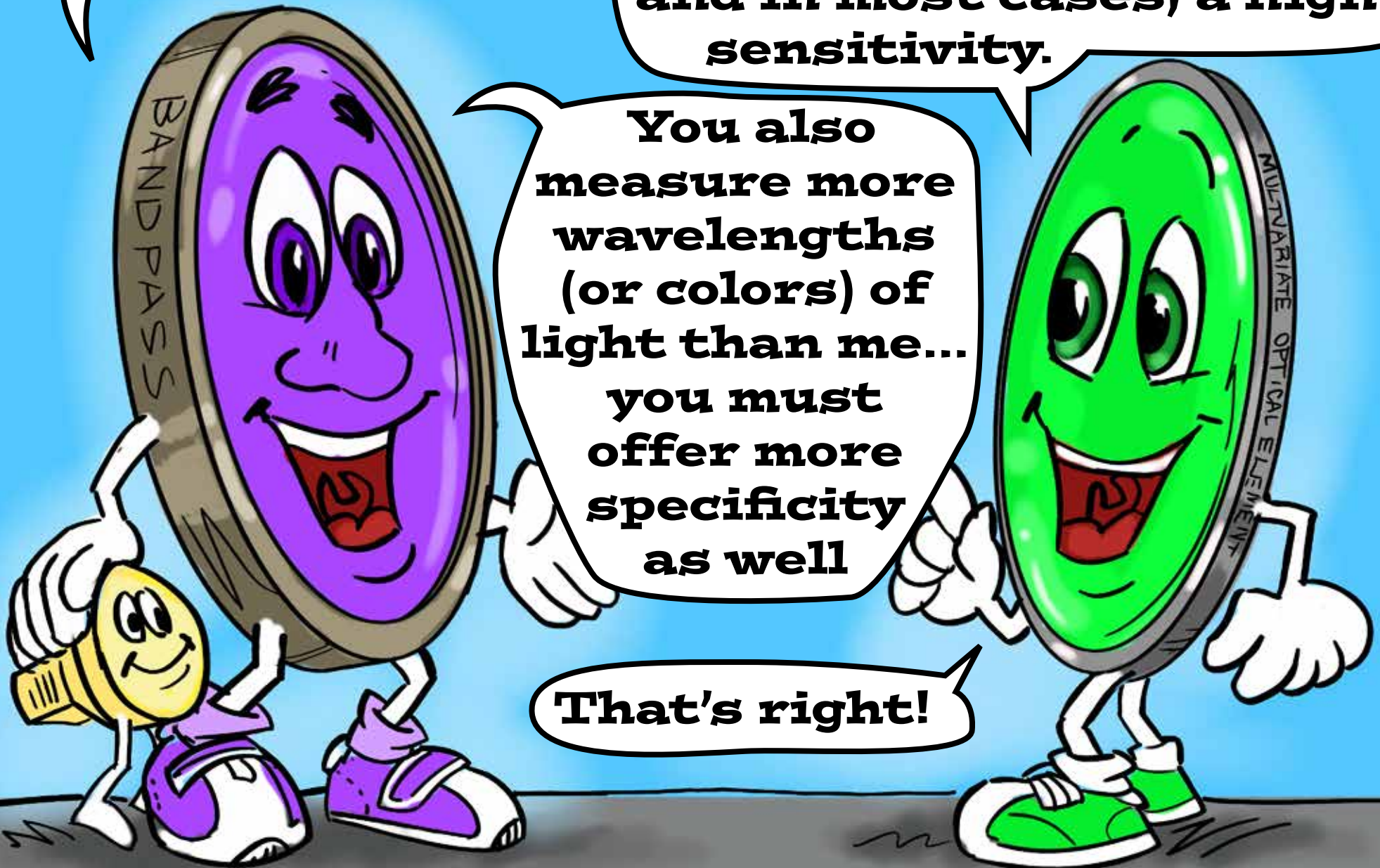


**Wow, so you are a lean, mean analytic detecting machine!**

**That's right! I also allow more light to "Sensor Buddy" which leads to a high signal to noise ratio and in most cases, a high sensitivity.**

**You also measure more wavelengths (or colors) of light than me... you must offer more specificity as well**

**That's right!**



**Also, I do not report my specifications based on physical attributes like number of layers and center wavelength value like you do. My performance is based on the application like standard error, sensitivity, etc...**

**Wow! So you are designed with the entire instrument and application in mind!**



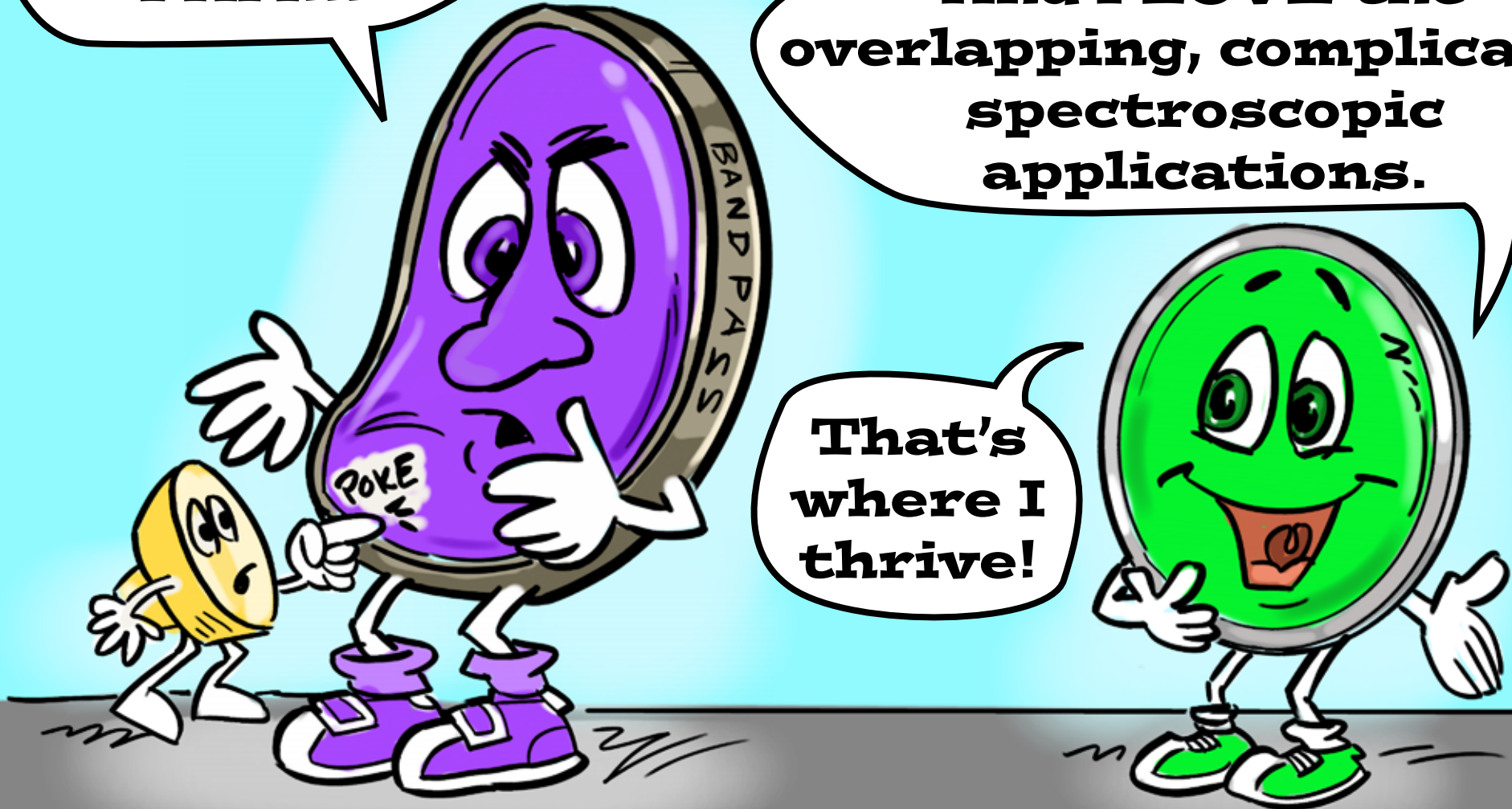
**All those cool features and benefits AND you're even thinner than I AM!!!**

**Well, we each certainly provide value! You are perfect for simple applications.**

**Yeah, I HATE when the spectral signals overlap... It's tough to see the signal!**

**And I LOVE the overlapping, complicated spectroscopic applications.**

**That's where I thrive!**



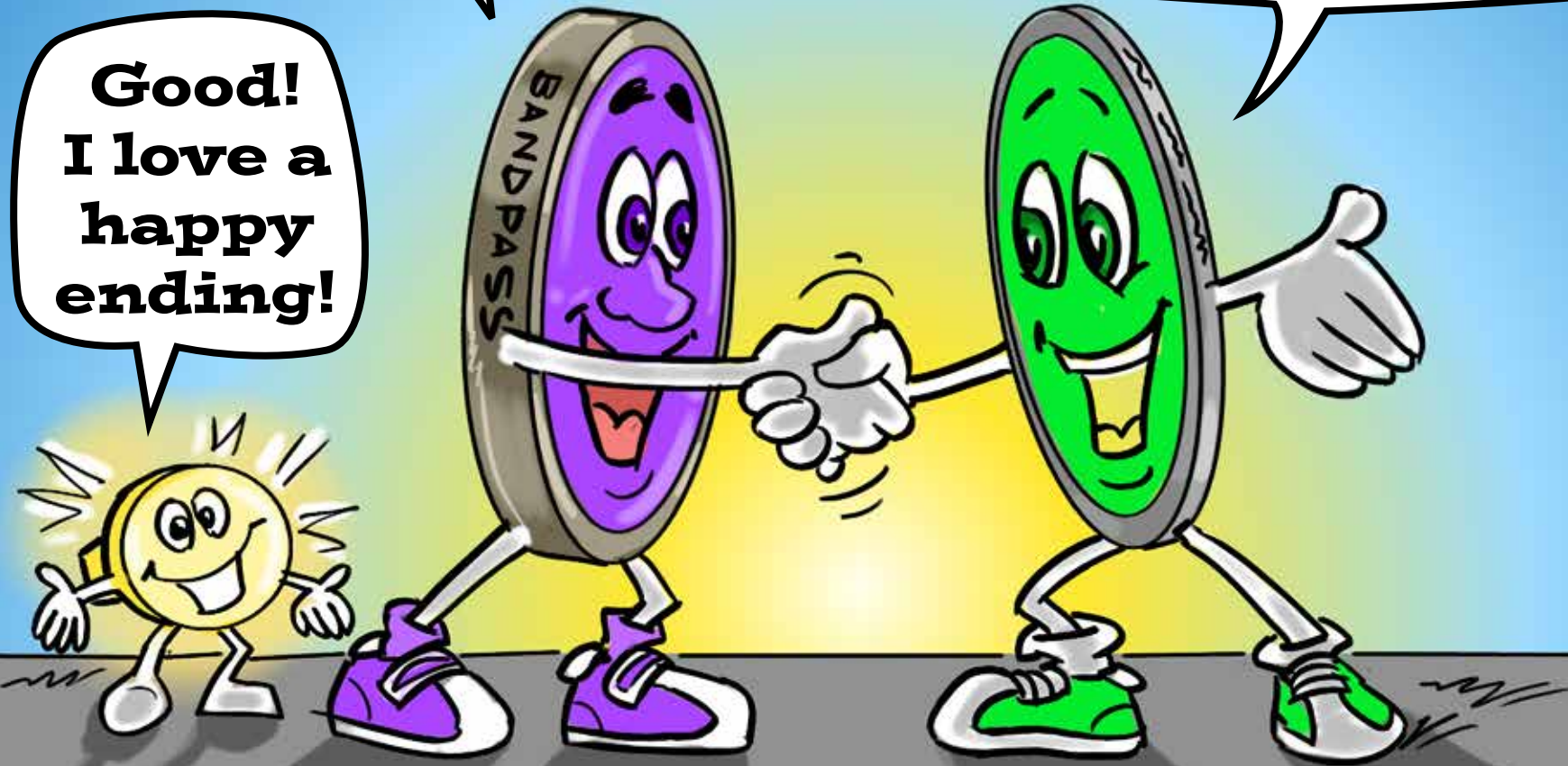


**If folks can solve their application with a traditional optical filter then you're the best choice!  
I'm just NOT a good fit.**

**So, we really do compliment each other!**

**ABSOLUTELY!  
We both help our customers solve different types of problems!**

**Good!  
I love a happy ending!**



# CIRTEMO™

**Visit [www.cirtemo.com](http://www.cirtemo.com)  
or call 803-467-4189  
to see how MOE  
can help you!**

**The Adventures of**

